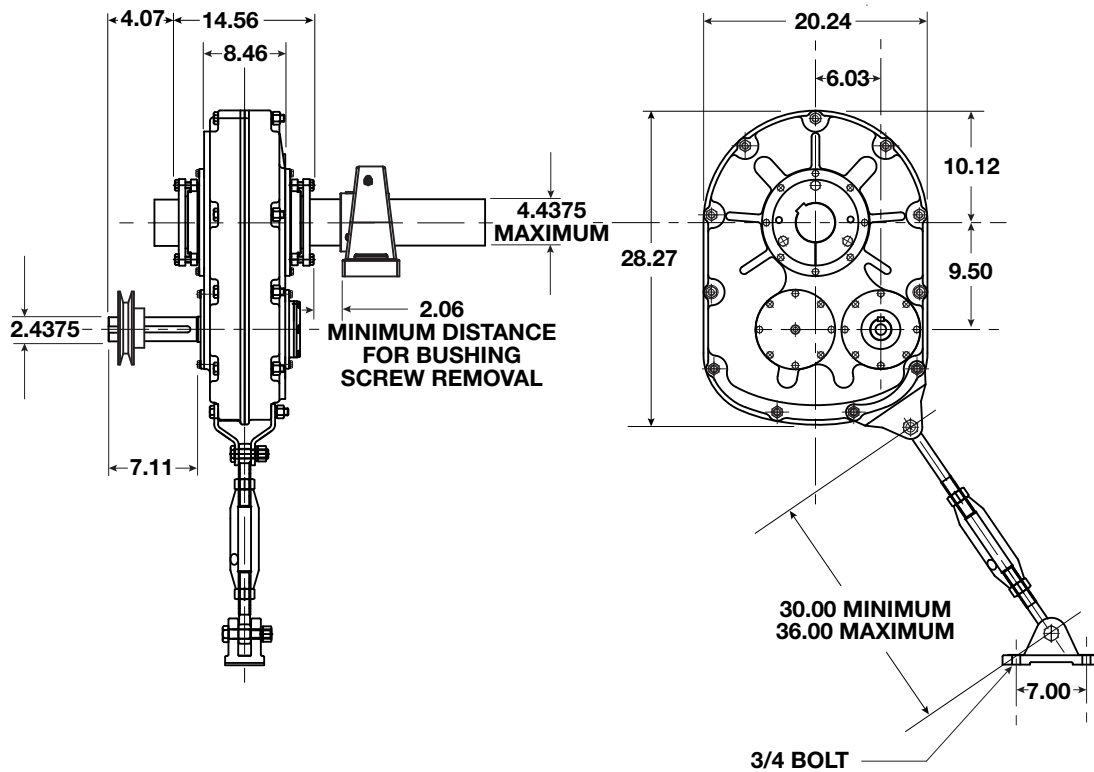




# VXT8 XD Dimensions

All dimensions listed in inches



## Output Hub Tapered Bushings (Other bushing sizes available by special order)

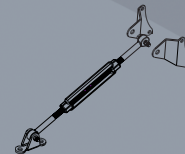
Bushing Kit Number (bore diameter)	Shaft Keyseat Required (inches)	Weight (lbs)
XBK8 2-15/16*	3/4 x 3/8 x 13-1/16	29.0
XBK8 3-7/16*	7/8 x 7/16 x 13-1/16	25.0
XBK8 3-15/16	1 x 1/2 x 13-1/16	20.0
XBK8 4-3/16	1 x 1/2 x 13-1/16	17.0
XBK8 4-7/16	1 x 1/2 x 13-1/16	15.0

\*Check the driven shaft and key for adequate load capacity.

## XD Style Speed Reducer (AGMA Size 407)

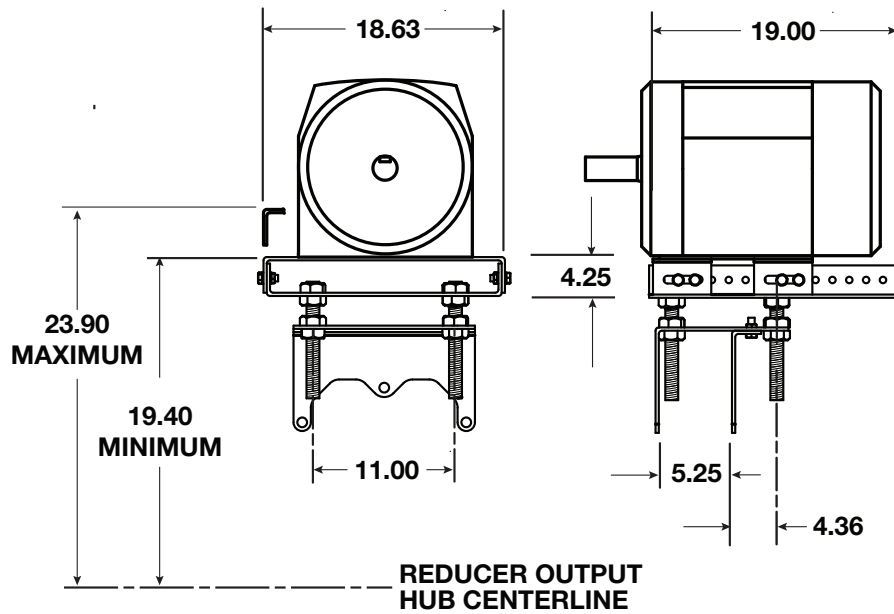
Reducer Unit	Exact Ratio	Maximum Output RPM	Weight (lbs)
VXT815 XD	14.79:1	120	543.0
VXT825 XD	24.33:1	75	543.0

## Included Torque Arm



Torque Arm Kit Number	Weight (lbs)
8TA	37.0

# VXT8 XD Accessories



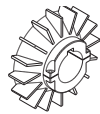
Motor Mount Kit Number	NEMA Motor Frame	Weight (lbs)
8MMA	213T-365T	119.0

V-Belt Center Distance for NEMA Frame Motors					
	210	250	280	320	360
Minimum	35.5	36.4	37.2	38.2	39.2
Maximum	40.5	41.2	42.2	43.2	44.2



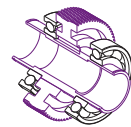
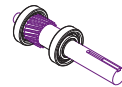
**Backstop**

8BKS



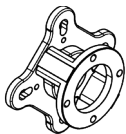
**Cooling Fan Kit**

8CFK



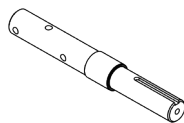
**Component Replacement Repair Kit**

8RK



**Screw Conveyor Flange**

Not Available



**Screw Conveyor Drive Shaft**

Not Available

**Output Shaft Diameter Options (in)**

Not Available



**Screw Conveyor Shaft Removal Wedge**

Not Available